



DESTINATIONS WITH NADINE, INC.

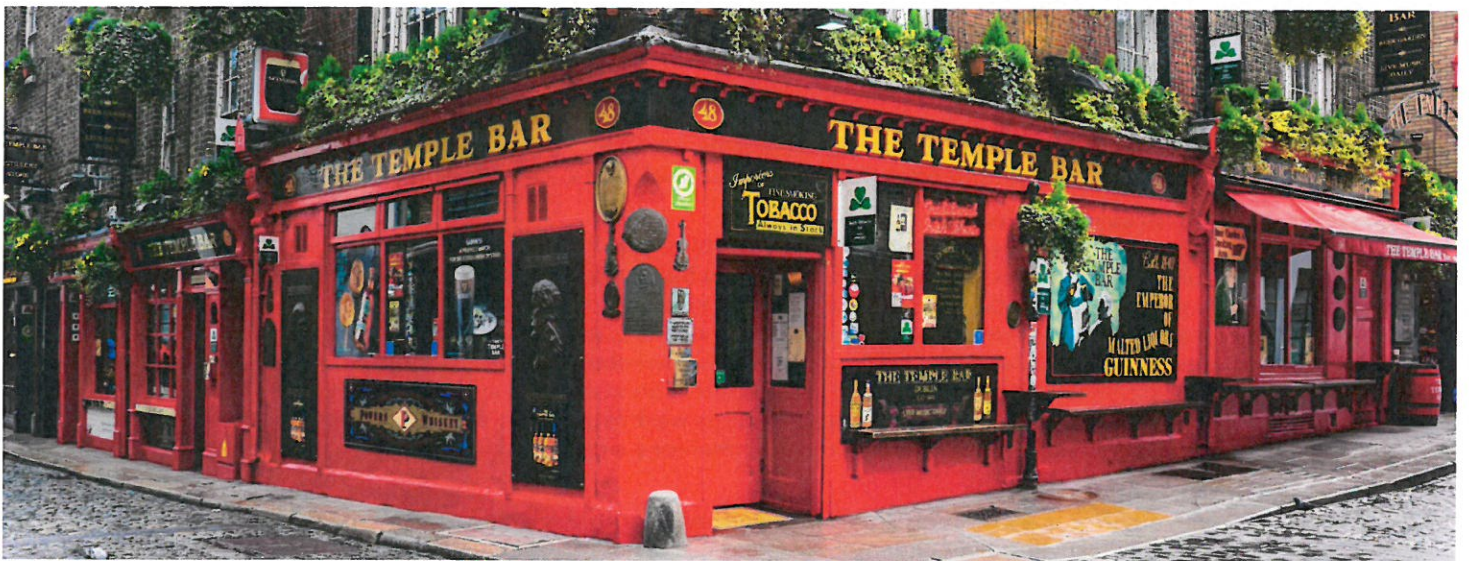


Celtic Beauties

Scotland, Northern Ireland, and Ireland



Thirteen-Day Tour! June 19 ~ July 1, 2023



Monday, June 19

(In-flight Dinner)

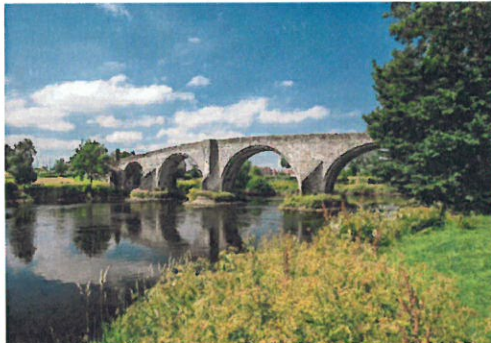
Our journey begins with an overnight flight to **Edinburgh, Scotland**.

Tuesday, June 20

(In-flight Breakfast, Dinner)

Arrive in **Edinburgh**, Scotland's majestic capital city. After departing the airport, we set off on a panoramic **guided city tour** featuring **Old and New Towns**.

Old Town is a labyrinth of cobbled streets, narrow alleyways and hidden courtyards contrasted by the neat and orderly elegance of New Town. Together they are a UNESCO World Heritage Site. **Royal Mile**, the center of Old Town, is packed full of specialty shops for you to explore. A tour of **St. Giles' Cathedral**, with its inspiring stained glass windows and medieval history, will be a highlight of our day! This afternoon we will check into the **Apex Waterloo Place Hotel Edinburgh** for one night. Enjoy dinner this evening at **Howies Waterloo Place**.



Wednesday, June 21 (Breakfast, Dinner)

Our day begins with breakfast at the hotel before we depart for a visit to the iconic **Edinburgh Castle**, home to Scotland's Crown Jewels. Next we will tour the **Royal Yacht Britannia**, the Queen's vessel that has played host to numerous dinner parties around the world as well as the honeymooning Charles and Diana. Then we'll journey to the inspiring and historical city of **Stirling**. Across the valley stands a large memorial to Sir William Wallace and his great victory at **Stirling Bridge** in 1297. At **Stirling Castle** we'll step back in time to the richness of royal life in the 1500s. Our **guide** will captivate us with stories of knights, foreign ambassadors and nobles who once flocked to the castle to revel in its grandeur. This afternoon we'll check into the beautiful **Atholl Palace Hotel** for three nights. Our hotel is located in Pitlochry, known as the *Gateway to the Highlands*, and offers award-winning gardens with scenic mountain and river views. After getting settled in our rooms, there is time to explore the hotel and gardens or relax. We'll enjoy dinner at the hotel along with splendid views of the Tummel Valley.

Thursday, June 22 (Breakfast, Dinner)

After breakfast we'll travel through spectacular **Cairngorms National Park** to the **Scottish Highlands**, a mountainous region with **Loch Ness** at the center. We'll explore **Culloden Battlefield Visitor Center**, located at the scene of Scotland's bloodiest battle where the 1745 Jacobite Rising came to its tragic end. We arrive in **Inverness**, the capital of the Highlands, for some free time and lunch. Later, we'll enjoy a **Loch Ness cruise** featuring magnificent scenery, historic monuments, intriguing tales surrounding a mysterious monster, and the weathered ruins of **Urquhart Castle**. We'll learn about the castle's dramatic history and view a collection of artifacts and historic replicas. Next, we'll watch an amazing **sheepdog demonstration** where a team of dogs work together to maneuver sheep through various obstacles. As our day comes to an end, we return to the hotel for a delicious dinner.

Friday, June 23 (Breakfast, Dinner)

Our day begins with a scenic drive through **Trossachs National Park**, which boasts some of the most stunning scenery in the world with its majestic mountains, glens, and the vast tranquil beauty of Loch Lomond. We will visit the **Trossachs Woollen Mill** followed by time for lunch at your leisure in the charming town of Callander. Next we arrive at the **Glenturret Distillery**, home of *Famous Grouse Whisky*, for a tour and tasting. Dinner is included upon our arrival back at the hotel this evening.

Saturday, June 24 (Breakfast, Dinner)

This morning we depart Scotland on a flight to **Belfast, Northern Ireland**. Upon arrival we will be met by our Irish driver/guide who will take us on a **tour of Belfast City**. We'll visit **Titanic Belfast**, a new state of the art visitor center,





that tells the story of the **RMS Titanic**, from her conception in Belfast to her infamous maiden voyage and tragic end. We'll check into the **Europa Hotel Belfast** where dinner will be included.

Sunday, June 25 (Breakfast, Dinner)

This morning we complete our **tour of Belfast** before we depart on a journey along one of the most scenic coastal routes in all of Ireland, the **Antrim Coast Road Drive**. Enjoy breathtaking views as we travel along the northern coastline. On a clear day, you can see the Mull of Kintyre in Scotland. Next, we travel through the picturesque villages of Glenarm, Carnlough and Cushendall. No visit to Northern Ireland would be complete without a stop at the **Giant's Causeway**, a remarkable basaltic formation of approximately 37,000 columns and ranked as one of the natural wonders of the world. Later we arrive in **Limavady** where we will check into the picturesque **Roe Park Resort Hotel**. A tasty dinner is included this evening.

Monday, June 26 (Breakfast, Dinner)

After breakfast, we embark on a **walking tour of Derry City**. As we walk on the 17th century walls, we will hear the history of this ancient city going back to 546 AD when St. Colmcille founded his first abbey here on the banks of the River Foyle. We'll also view the new **Derry Peace Bridge** over the River Foyle. This pedestrian bridge, opened in 2011 and spans a 400-year-old physical and political gap between two sides of a once divided community. Following our tour we depart Derry City and travel to **Omagh** where we will visit the **Ulster American Folk Park**, an outdoor museum of emigration history that depicts emigrant life on both sides of the Atlantic. A ship and dockside gallery link the old world to the new. From here, it is on to **Rosstown**, where we'll check into the **Sandhouse Hotel & Marine Spa** for a two-night stay. Tonight, we'll gather together for another delicious dinner.

Tuesday, June 27 (Breakfast, Dinner)

Today we **tour County Donegal**, the most north-westerly county in Ireland. Painters, poets and writers have never fully succeeded in conveying the varied beauty of this wonderland of mountains, lakes and coastline. We'll stop in **Ardara**, center of the Donegal homespun and knitting industry, where we'll view a **hand weaving demonstration** in the **Triona Design Center**. Following free time for shopping and a complimentary **Irish Coffee**, our tour continues as we wind our way around the Blue Stack mountain range to **Leo's Tavern**, which is the family home of Ireland's international singing star Enya. There is time for you to enjoy lunch and refreshments in Leo's Tavern before returning to our hotel. Tonight we'll enjoy dinner at our hotel.

Wednesday, June 28 (Breakfast, Dinner)

Enjoy breakfast at the hotel before we depart and travel to **Belleek** for a **guided tour** of this world-famous fine **Parian China manufacturing center**. Our journey continues along the banks of Lough Erne to Enniskillen, the capital of county Fermanagh, and through the counties of Cavan and Meath. Late this afternoon we'll check into the **Camden Court Hotel** in **Dublin** for three nights. Dinner is included this evening.

Thursday, June 29 (Breakfast)

Today enjoy a **tour of Dublin**, Ireland's capital city, situated on the River Liffey. We will see *The Georgian Squares* with their 18th-century houses, and statue-filled O'Connell Street. Then take a self-guided tour of the **Guinness Brewery** and sample Ireland's famous stout. By mid-afternoon we return to our hotel. Get out and explore the area's shops, museums, public squares and lively pubs.

Friday, June 30 (Breakfast, Dinner)

Today we travel to **Glendalough** in **County Wicklow**, where we will visit a **monastic site** that was founded by St. Kevin in the sixth century. Enter the gateway arches that lead into the Cashel where you will find the often photographed Round Tower, remains of several churches and cathedrals, and ancient gravestones and Celtic crosses. Our next stop is **Powerscourt** to see the expansive **18th-century estate gardens** - which have been ranked among the World's Top Ten Gardens by National Geographic! Upon our return to Dublin you will have the remainder of the afternoon free to relax or explore on your own. A **farewell dinner** is included in the lovely dining room of our hotel. Then walk into nearly any pub in the city to enjoy live, local music.

Saturday, July 1 (Breakfast)

As we fly home today we'll be taking with us fond memories of the enchanting places we have visited!

Tour Cost per person:

\$5,548 Double

\$6,268 Single

* These prices are based on the value of the British Pound and Euro as of August 2022. Tour participants will be notified prior to final payment of any changes to the tour cost due to fluctuations in the exchange rates.

TOUR INCLUDES

- Round trip airport transfers from Mundelein
- Air travel (Edinburgh/Glasgow, Glasgow/Belfast and Dublin/Chicago)
- Deluxe motor coach transportation
- Eleven nights in first class hotel accommodations
- Baggage handling at hotels (where available)
- 21 Meals: 11 breakfasts and 10 dinners, plus in-flight meals
- All activities and entrances as listed in the itinerary
- All tour-related gratuities for included meals, local guides, and drivers
- All tour-related taxes and fees
- Services of knowledgeable, local tour directors/drivers in Scotland, Northern Ireland, and Ireland
- Services of a **Destinations With Nadine** host

Reservations:

Please submit a completed reservation form along with your **\$100 per person deposit** to:

Destinations with Nadine, Inc.

Attn: Nadine Mihaljevic

PO Box 304

Mundelein, IL 60060

Phone: 847-902-8064

E-mail: DestinationsWithNadine@gmail.com

Please make checks payable to
Destinations With Nadine, Inc.

If interested in the **optional travel protection plan** (highly recommended), please request a quote from Nadine.

Deposit: \$100 per person

Balance due: March 3, 2023

Not Included: Optional travel protection plan premium (highly recommended). Please ask Nadine for information.

Travel Documents: All passengers must carry a **passport valid at least six months beyond the return date of the trip.**

Activity Level: Easy 1 2 3 **4** 5 Active

Cancellation Policy: All payments are fully refundable for cancellations received by **March 3, 2023**. Although every effort will be made to refund passenger payments, cancellations received after this date will be subject to the penalties imposed by our suppliers including, but not exclusive to, the airline used to purchase non-refundable air tickets, as well as a \$150 cancellation fee. It is highly suggested that all travelers help protect their vacation investment by purchasing an optional travel protection plan. Your group representative can provide information on a plan. Should the passenger purchase travel protection and need to cancel after **March 3, 2023**, a travel protection claim must be filed.

Travel arrangements by Cruises and Tours Worldwide, St. Louis, MO and Destinations With Nadine, Inc. Mundelein, IL Cruises and Tours Worldwide and Destinations With Nadine, Inc. act only as an intermediaries and agents in handling travel arrangements that are actually provided by other suppliers. These agencies, therefore, shall not be responsible for breach of contract or any careless actions or omissions on the part of such suppliers, which result in any loss, damage, delay or injury to tour participants. Cruises and Tours Worldwide and Destinations With Nadine, Inc. may not be held responsible for losses or expenses due to sickness, lack of appropriate medical facilities or practitioners, public health issues, quarantine, weather, strikes, political instability, government restrictions, theft or other criminal acts, war, terrorism or acts of God. Cruises and Tours Worldwide and Destinations With Nadine, Inc. retain the right to substitute accommodations or services of comparable quality if the advertised services become unavailable. Cruises and Tours Worldwide and Destinations With Nadine, Inc. reserve the right to cancel this tour if the minimum number of tour participants is not met. The published price of this tour is based on rates available at the time of booking. Cruises and Tours Worldwide and Destinations With Nadine, Inc. reserve the right to increase the cost of the tour, at any time, in the unlikely event that our tour suppliers impose price increases such as, but not limited to, fuel surcharges. Proof of such rate adjustments from our suppliers will be provided.





Please complete this reservation form (one per person) and mail it along with your \$100 per person deposit.
to: Destinations With Nadine, Inc. Attn: Nadine Mihaljevic, PO Box 304, Mundelein, IL 60060

Please print Full Name:
Exactly as it appears on your passport.

Gender: Male Female Birth date (month/day/year):

Familiar name or nickname:

Street Address:

City/State/Zip:

Phone number (with area code): Home: Cell:

Email Address:

Passport #: Issuing Country:

Passport Issue Date: (mm/dd/year) Passport Expiration Date: (mm/dd/year)

Passport must be valid for at least six months beyond the return date of the tour.

Your roommate's name, if applicable:

Please indicate your bedding preference: King Bed or Two Double Beds
(King bed cannot be guaranteed)

Do you require wheelchair assistance in the airport? TSA Known Traveler #: Optional

Please note if you require a Special Diet or Allergies**:

** Important -please list at this time

Anniversary / Other Special Occasion during the tour: Occasion: Date

Air Rewards # Airlines:

Please check one: Double: \$5,548 per person Single: \$6,268 per person (Only 7 Single available)

Please make checks payable to Destinations with Nadine, Inc. Reserve By: March 3, 2023

Optional Travel Protection payment is due by final payment. Final Payment Due: March 3, 2023

Credit cards can be used for final payment only and will incur a 3% handling fee.

Optional Travel Protection Plan is Highly Recommended. Protection Plan should be purchased two weeks prior to final payment. Contact Nadine at or DestinationsWithNadine@gmail.com or 847-902-8064 for a quote.



This policy must be read and signed before your tour reservation is accepted.

CANCELLATION POLICY: All payments are fully refundable for cancellations received by **March 3, 2023**. Although every effort will be made to refund passenger payments, cancellations received after this date will be subject to the penalties imposed by our suppliers including, but not exclusive to, the airline used to purchase non-refundable air tickets, as well as a \$150 cancellation fee. Should the passenger purchase travel protection and need to cancel after **March 3, 2023**, a travel protection claim must be filed.

Travel Protection: An optional travel protection plan is available for purchase and highly recommended for international travel. Please contact Nadine for additional details and a quote at DestinationsWithNadine@gmail.com or 847-902-8064.

I ACCEPT the optional Travel Insured Protection plan and am including the premium two weeks prior to final payment date. I agree Destinations With Nadine, Inc., or Cruises and Tours Worldwide are not liable for any losses, financial or otherwise.

I DECLINE the optional Travel Insured Travel Protection Plan and in doing so realize that I may lose all or part of my trip payment if I must cancel after the cancellation date noted on the trip flier. I also realize that I will be 100% responsible for all expenses incurred due to cancelled or delayed flights; if I become sick, injured or die while on the trip; or if I must leave the tour to return home. I will also not have coverage for lost or damaged luggage, additional lodging or meals if delayed or for any unused portion of the tour. **I agree Destinations With Nadine, Inc. and Cruises and Tours Worldwide are not liable for any losses, financial or otherwise.**

Travel arrangements by Cruises and Tours Worldwide, St. Louis, MO and Destinations With Nadine, Inc. Mundelein, IL
Cruises and Tours Worldwide and Destinations With Nadine, Inc. act only as an intermediaries and agents in handling travel arrangements that are actually provided by other suppliers. These agencies, therefore, shall not be responsible for breach of contract or any careless actions or omissions on the part of such suppliers, which result in any loss, damage, delay, or injury to tour participants. Cruises and Tours Worldwide and Destinations With Nadine, Inc. may not be held responsible for losses or expenses due to sickness, lack of appropriate medical facilities or practitioners, public health issues, quarantine, weather, strikes, political instability, government restrictions, theft or other criminal acts, war, terrorism or acts of God. Cruises and Tours Worldwide and Destinations With Nadine, Inc. retain the right to substitute accommodations or services of comparable quality if the advertised services become unavailable. Cruises and Tours Worldwide and Destinations With Nadine, Inc. reserve the right to cancel this tour if the minimum number of tour participants is not met. The published price of this tour is based on rates available at the time of booking. Cruises and Tours Worldwide and Destinations With Nadine, Inc. reserve the right to increase the cost of the tour, at any time, in the unlikely event that our tour suppliers impose price increases such as, but not limited to, fuel surcharges. Proof of such rate adjustments from our suppliers will be provided.

COVID-19 WARNING: The novel coronavirus, COVID-19, has been declared a worldwide pandemic by the World Health Organization and is reported to be contagious. The state of medical knowledge is evolving, and while the exact methods of spread and contraction are unknown, the virus is believed to spread from person-to-person contact and possibly by contact with contaminated surfaces and objects or in the air. Both vaccinated and unvaccinated people reportedly can be infected and show no symptoms and therefore spread the disease. Evidence has shown that COVID-19 can cause serious and potentially life-threatening illness and even death, even among those who have been fully vaccinated. Depending on each country's requirements in June 2023, proof of full vaccination against COVID-19 may be required by all travelers at the time of departure. Many businesses and venues may require a mask to be properly worn, including (but not limited to) airports, airplanes, buses, museums, shops, hotels, boats, and restaurants.

ASSUMPTION OF RISK: I have read and understand the above warnings concerning COVID-19 and vaccine/mask requirements, and I voluntarily assume risks associated with exposure by virtue of my presence on this tour. Cruises and Tours Worldwide and Destinations With Nadine, Inc. cannot prevent you or anyone in your group from becoming exposed to, contracting, or spreading COVID-19 while on tour. I understand that exposure to COVID-19 may cause personal injury, illness, permanent disability, and/or death. I understand that if I cannot provide proof of full vaccination, if required at the time of departure, I may be ineligible for any refund if denied access to the flights, denied entry into the destination counties, or denied access into any venue along the tour. I understand that that if I am required to quarantine, the travel protection policy (if purchased) may not cover all of my expenses.

WAIVER OF LAWSUIT/LIABILITY: I, my family, my heirs, my legal representation, and my assigns hereby forever release and waive the right to sue Cruises and Tours Worldwide, Destinations With Nadine, Inc., their parent companies, their owners, officers, directors, managers, officials, trustees, successors, agents, employees, or other representatives in connection with exposure, infection, and/or spread of COVID-19, as well as any financial losses related to my inability to access some/all components of a tour due to vaccination status requirements and/or my inability or unwillingness to wear a mask. I understand that I may be responsible for significant up-front costs if I am required to quarantine, and that these costs may not be 100% covered by the travel protection policy, if purchased. I understand that this waiver means I give up my right to bring any claims including for personal injuries, death, disease or property losses, or any other loss, including but not limited to claims of negligence and give up any claim I may have to seek damages, whether known or unknown, foreseen, or unforeseen.

Signature: _____

Date: _____

Printed Name: _____



TRAVEL INSURED INTERNATIONAL
A CRUM & FORSTER COMPANY

www.travelinsured.com

DESTINATIONS WITH NADINE, INC.

Agency # 53448



Insurance Benefits

	WORLDWIDE TRIP PROTECTOR	WORLDWIDE TRIP PROTECTOR EDGE
Trip Cancellation**	Up to 100% of Trip Cost*	Up to 100% of Trip Cost*
Trip Interruption***	Up to 150% of Trip Cost*	Up to 100% of Trip Cost*
Trip Delay	\$1,500 (\$200 per day) - 3 hours	\$300 (\$100 per day) - 12 hours
Change Fee	\$250	\$250
Itinerary Change	\$500	n/a
Frequent Travel Reward	\$250	\$250
Single Supplement	Included	Included
Missed Tour or Cruise Connection	\$500 - 3 hours	\$300 - 12 hours
Pet Kennel	\$500 (\$50 per day)	n/a
Medical Evacuation and Repatriation of Remains	\$1,000,000	\$100,000
Political or Security Evacuation and Natural Disaster Evacuation	\$150,000	n/a
Baggage and Personal Effects	\$1,000 (\$250 per article)	\$750 (\$250 per article)
Baggage Delay	\$500 - 3 hours	\$200 - 12 hours
Accident & Sickness Medical Expense	\$100,000	\$10,000
<i>Dental Expense</i>	\$750	\$750
24-Hour Accident Death and Dismemberment	\$10,000	n/a
Pre-existing Medical Conditions Exclusion Waiver ¹	Available	Available

Optional Upgrade Benefits (Available for an additional cost.)

Cancel for Any Reason (CFAR)** ²	Up to 75% Trip Cost*	n/a
Interruption for Any Reason (IFAR)** ²	Up to 75% Trip Cost*	n/a
Cancel for Work Reasons** ²	Included under Trip Cancellation	Up to 100% Trip Cost*
Accident Death and Dismemberment Air Flight Only	Up to limit purchased	Up to limit purchased
Medical Evacuation and Repatriation of Remains	n/a	Additional \$100,000
Accident & Sickness Medical Expense	n/a	Additional \$40,000
Baggage & Personal Effects - Electronic Equipment	\$2,000	n/a
Event Ticket Registration Fee Protection	\$1,000	n/a
Rental Car Damage and Theft Coverage	\$50,000	\$25,000
Travel Inconvenience	\$750 (\$250 each)	n/a
Travel Inconvenience - Bed Rest	\$4,000	n/a

* Up to the lesser of the Trip Cost paid or the limit of coverage on Your confirmation of coverage.

** Not applicable when \$0 Trip Cost displayed on Your confirmation of coverage.

*** For Worldwide Trip Protector only: \$500 return air ticket cost only if \$0 Trip Cost displayed for Trip Cancellation on Your confirmation of coverage. For Worldwide Trip Protector Edge: Trip Interruption is not applicable when \$0 Trip Cost displayed on Your confirmation of coverage.

¹The plan must be purchased within 21 days for WTP, or 14 days for Edge, of initial trip payment or deposit to be eligible. Additional terms apply.

² CFAR & IFAR must be purchased within 21 days of the date your initial trip payment or deposit is received, and Cancel for Work Reasons must be purchased within 14 days of initial trip deposit. Additional terms apply.

Non-Insurance Worldwide Assistance Services are included in both plans and include:

Medical or Legal Referral, Inoculation Information, Hospital Admission Guarantee, Telemedicine, House Calls, Translation Service, Lost Baggage Retrieval, Passport/Visa Information, Emergency Cash Advance, Bail Bond, Prescription Drug/Eyeglass Replacement, ID Theft Resolution Service, Concierge Service, and Business Concierge

This advertisement contains highlights of the plans, which include travel insurance coverages underwritten by United States Fire Insurance Company under form series T7000 et. al., T210 et. al., and TP401 et. al. The Crum & Forster group of companies is rated A (Excellent) by AM Best 2020. C&F and Crum & Forster are registered trademarks of United States Fire Insurance Company. The plans also contain non-insurance Travel Assistance Services provided by C&F Services through Active Claims Management (2018) Inc., operating as Active Care Management. Coverages may vary and not all coverage is available in all jurisdictions. Insurance coverages are subject to the terms, limitations and exclusions in the plan, including an exclusion for pre-existing conditions. In most states, your travel retailer is not a licensed insurance producer/agent, and is not qualified or authorized to answer technical questions about the terms, benefits, exclusions, and conditions of the insurance offered or to evaluate the adequacy of your existing insurance coverage. Your travel retailer may provide general information about the plans offered, including a description of the coverage and price. The purchase of travel insurance is not required in order to purchase any other product or service from your travel retailer. Your travel retailer may be compensated for the purchase of a plan. CA DOI toll free number: 800-927-4357. MD Insurance Administration: 800-492-6116 or 410-468-2340. The cost of your plan is for the entire plan, which consists of both insurance and non-insurance components. Individuals looking to obtain additional information regarding the features and pricing of each travel plan component, please contact Travel Insured: P.O. Box 6503, Glastonbury, CT 06033; 800-243-3174; customercare@travelinsured.com; California license #0113223.

07.19.2021 | T-17797 | AH-3426



**TRAVEL INSURED
INTERNATIONAL**
A CRUM & FORSTER COMPANY

DESTINATIONS WITH NADINE, INC.

Agency # 53448



Optional Travel Protection Form

Thank you for consulting with our agency for your travel needs. We value your business and appreciate the time you have spent with us to build your dream vacation. Below you will find information about the travel protection we offer to help protect your trip.

Please read this carefully!

You are a valued client and we want to do everything possible to make your trip enjoyable. Because the unexpected can occur - before you leave or when you're away from home - consider purchasing a travel protection plan. We offer a plan from Travel Insured which combines insurance coverage with non-insurance assistance services. Please read the Travel Insured brochure carefully for more information.

NO, do not enroll me for the Travel Insured Protection Plan. I understand that I am responsible for any cancellation penalties and out-of-pocket expenses incurred. I will also make my own provisions in the event of an emergency while I am traveling.

Amount at risk:

If you are forced to cancel or interrupt your trip, you may forfeit up to:

\$ _____

Travel Insured Plan Cost:

You can help protect your travel investment for:

\$ _____

NAME (PLEASE PRINT)

SIGNATURE

DATE

Trip Name:

Travel Dates: